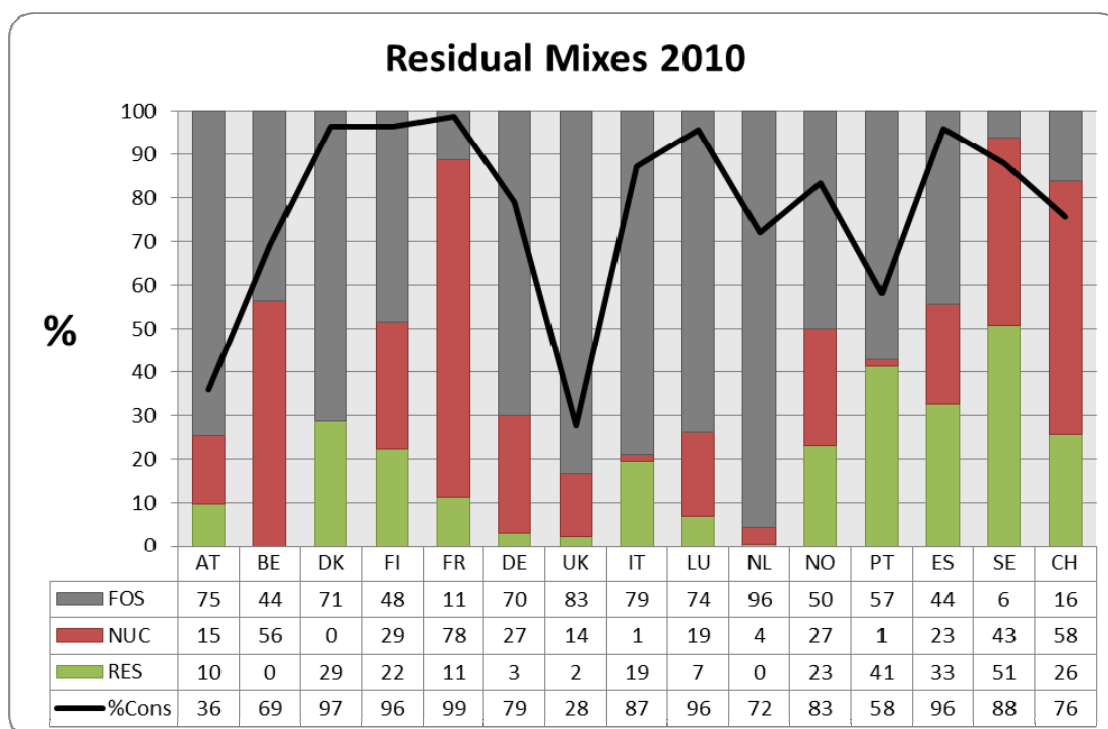


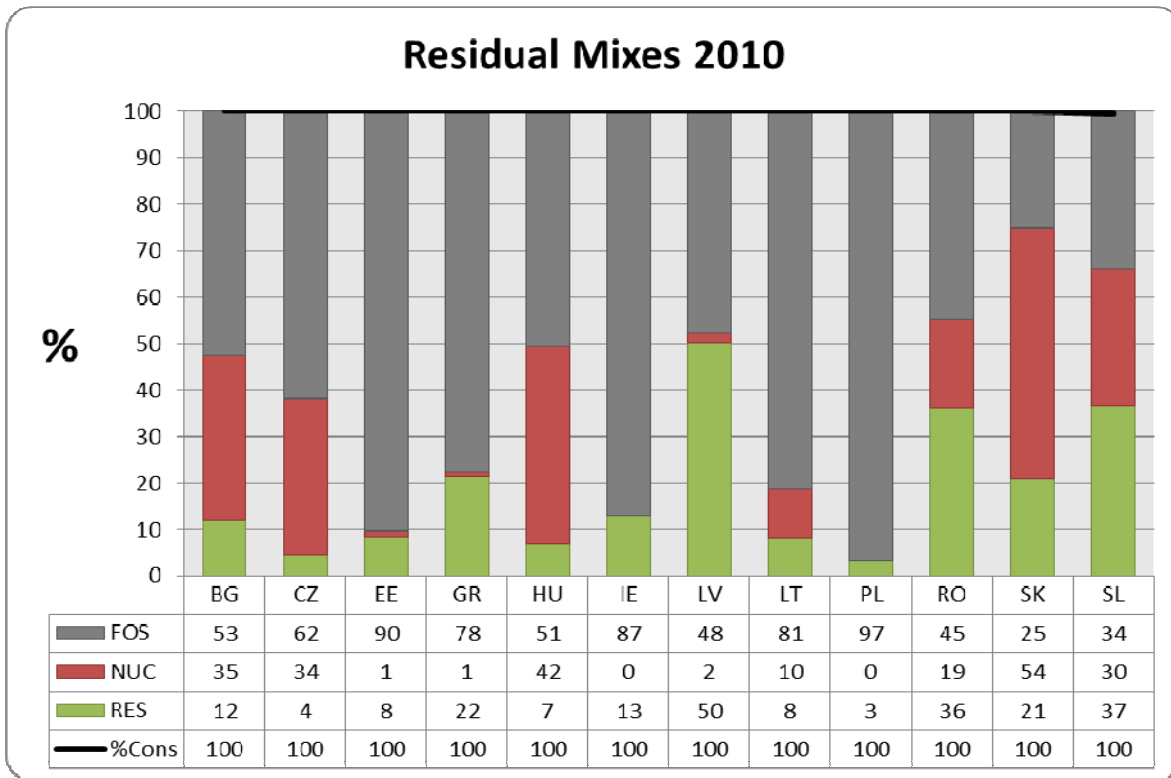
2010 Revised National Residual Mix for Electricity Disclosure

The following two charts represent the national Residual Electricity Fuel Mixes for 2010 as calculated by the RE-DISS project for 27 European countries (EU 27 without CY and MT, but including NO and CH). This Residual Mix is applicable for the disclosure of untracked electricity consumption. The share of Untracked Consumption of total consumption in each country is indicated by the black line in the charts. For the group of countries shown in the latter chart no use of Reliable Tracking Systems was recorded and thus Residual Mix is applicable for the disclosure of the entire electricity consumption.

In Residual Mix Calculation explicitly tracked attributes (based on data available by mid-May regarding EECS certificates, National GOs and other specific Tracking Systems¹) are subtracted from the production attributes of each country. The remaining available attributes constitute the domestic Residual Mix. Due to international trade of both electricity and electricity attributes the amount of attributes in a domestic Residual Mix can differ from the volume of Untracked Consumption (in TWh) in the same country. Thus, the calculation is harmonized for the entire area using a European Attribute Mix (EAM). After balancing, the shares of different energy sources in the Residual Mix can be used to disclose Untracked Consumption in each country.



¹In case official data is collected on Contract-Based Tracking, it is included



For more information about the RE-DISS project, please contact the project assistant Ms Anja Sachs,
 e-mail: [a.sachs\(at\)oeko.de](mailto:a.sachs@oeko.de), or phone: +49 761 45 295 -26, and consult the project website:
www.reliable-disclosure.org